



Controls - Watervliet Modernization

The Gymnasticator is a mechanical device used for non-destructive testing of the performance and integrity of the breech block assembly used in the M1 Abrams Tank cannon. Using hydraulics, the test apparatus simulates the motion and forces that occur on and within the breech assembly during the recoil, counter recoil, case rotation, and case ejection cycle that occurs after the cannon is fired. In addition to controlling the operation of this equipment by the use of a PLC and other sophisticated controls and instruments, a printed report of the data received in the test is produced.



BEFORE



AFTER

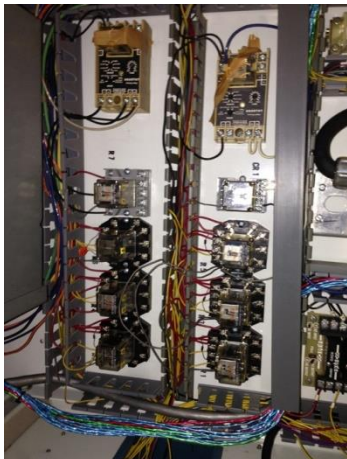


The original equipment was designed and built by EDE using 1985 state of the art equipment. In 2015, after 30 years of satisfactory performance, EDE was requested to update the equipment to current technology. EDE modernized the equipment to streamline the performance and maintainability including a simplified data output with auto generated reports for fast, accurate, and simplified data. Our standards of high quality materials and craftsmanship yield reliable, easy to maintain equipment that sets us above our competitors.

EDE has unparalleled engineering experience enabling us to deliver a turnkey process for any size job. Our controls capabilities include:

- Design
- Build
- Test
- Install
- PLC & HMI Programming
- New Systems & Retrofit/System Upgrade

BEFORE



AFTER



BEFORE



AFTER

